

NEURO VARIO-CLASSIC

NEURO VARIO-CLASSIC 2

NEURO VARIO

NEURO VARIO 2



NEURO VARIO-SPRING

NEURO VARIO-SPRING 2

NEURO VARIO-SWING

# NEURO VARIO-CLASSIC



	Dorsiflexion Stop	Plantar Flexion Stop
Main Function	 <p>static</p>	 <p>none</p>
Adjustment Options	fileable, adjustable	
Other Functions	none by filing	

The NEURO VARIO-CLASSIC system ankle joint can be used as a supporting joint for NEURO VARIO-SPRING.

The NEURO VARIO-CLASSIC system ankle joint is can be converted into a NEURO VARIO-SPRING system ankle joint by exchanging the cover plate for a NEURO VARIO-SPRING functional unit.



NEURO VARIO-CLASSIC

NEURO VARIO-CLASSIC 2

NEURO VARIO

NEURO VARIO 2

NEURO VARIO-SPRING

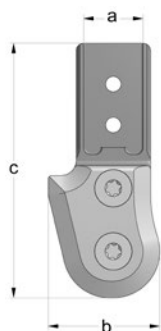
NEURO VARIO-SPRING 2

NEURO VARIO-SWING



Joint Dimensions [mm]				
Dimension	Description	System Width a		
		14mm	16mm	20mm
b	joint head width	25	30	34
c	joint height	63	69	74
	joint thickness	11	11.5	12.5

Joint Weights [g]				
Material	Unit	System Width		
		14mm	16mm	20mm
steel	piece	47	69	96
titanium	piece	31	47	63



The NEURO VARIO-CLASSIC system ankle joint is delivered with the following articles:

securing pin
AGOMET® F330, 5g
orthosis joint grease, 3g
assembly/lamination dummy

- ➔ Please order system stirrups and system side bars/anchors separately.
- ➔ You will find system stirrups on catalogue page B10.7f.
- ➔ You will find system side bars/anchors on catalogue page I1ff.



straight  
fig. 1



bent inwards  
fig. 2



bent outwards  
fig. 3

**Straight (Fig. 1)**

Material	Leg Side	Unit	Article Number for System Width		
			14mm	16mm	20mm
steel	left lateral or right medial	piece	SH2202-L/ST	SH2203-L/ST	SH2205-L/ST
	left medial or right lateral	piece	SH2202-R/ST	SH2203-R/ST	SH2205-R/ST
titanium	left lateral or right medial	piece	SH2202-L/TI	SH2203-L/TI	SH2205-L/TI
	left medial or right lateral	piece	SH2202-R/TI	SH2203-R/TI	SH2205-R/TI

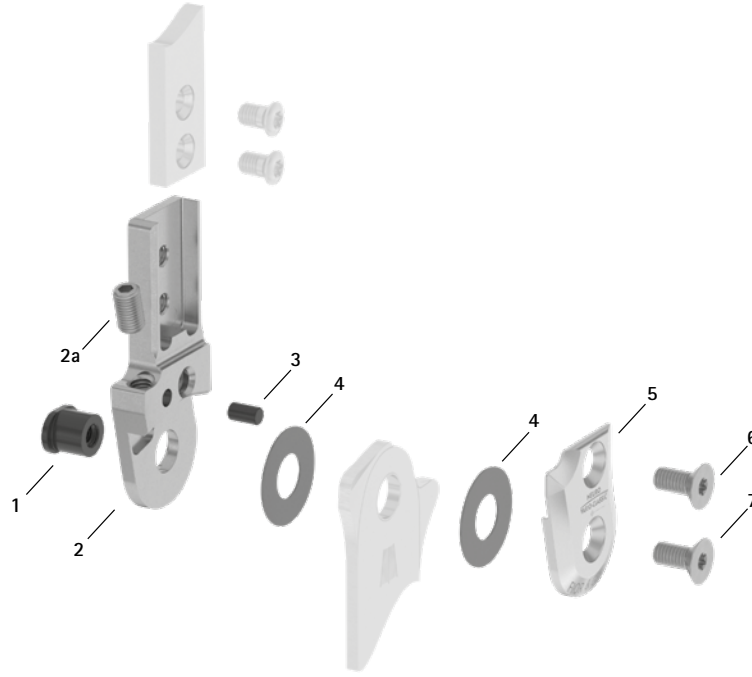
**Bent Inwards (Fig. 2)**

Material	Leg Side	Unit	Article Number for System Width		
			14mm	16mm	20mm
steel	left lateral or right medial	piece	SH2222-L/ST	SH2223-L/ST	SH2225-L/ST
	left medial or right lateral	piece	SH2222-R/ST	SH2223-R/ST	SH2225-R/ST
titanium	left lateral or right medial	piece	SH2222-L/TI	SH2223-L/TI	SH2225-L/TI
	left medial or right lateral	piece	SH2222-R/TI	SH2223-R/TI	SH2225-R/TI

**Bent Outwards (Fig. 3)**

Material	Leg Side	Unit	Article Number for System Width		
			14mm	16mm	20mm
steel	left lateral or right medial	piece	SH2242-L/ST	SH2243-L/ST	SH2245-L/ST
	left medial or right lateral	piece	SH2242-R/ST	SH2243-R/ST	SH2245-R/ST
titanium	left lateral or right medial	piece	SH2242-L/TI	SH2243-L/TI	SH2245-L/TI
	left medial or right lateral	piece	SH2242-R/TI	SH2243-R/TI	SH2245-R/TI

Spare Parts



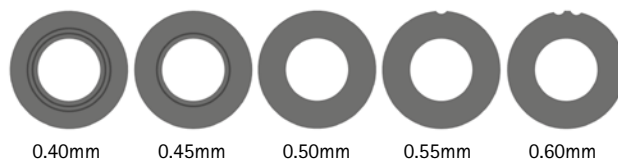
Spare Parts

Item	Article Number for System Width			Description
	14mm	16mm	20mm	
1	SB8559-L0620	SB9669-L0760	SB1069-L0810	bearing nut
2	SF0412-L/ST	SF0413-R/ST	SF0415-L/ST	upper part, left lateral or right medial, straight, steel (with adjusting screw)
2	SF0412-R/ST	SF0413-R/ST	SF0415-R/ST	upper part, left medial or right lateral, straight, steel (with adjusting screw)
2	SF0412-L/TI	SF0413-L/TI	SF0415-L/TI	upper part, left lateral or right medial, straight, titanium (with adjusting screw)
2	SF0412-R/TI	SF0413-R/TI	SF0415-R/TI	upper part, left medial or right lateral, straight, titanium (with adjusting screw)
2	SF0432-L/ST	SF0433-L/ST	SF0435-L/ST	upper part, left lateral or right medial, bent inwards, steel (with adjusting screw)
2	SF0432-R/ST	SF0433-R/ST	SF0435-R/ST	upper part, left medial or right lateral, bent inwards, steel (with adjusting screw)
2	SF0432-L/TI	SF0433-L/TI	SF0435-L/TI	upper part, left lateral or right medial, bent inwards, titanium (with adjusting screw)
2	SF0432-R/TI	SF0433-R/TI	SF0435-R/TI	upper part, left medial or right lateral, bent inwards, titanium (with adjusting screw)
2	SF0432-8L/ST	SF0433-8L/ST	SF0435-8L/ST	upper part, left lateral or right medial, bent outwards, steel (with adjusting screw)
2	SF0432-8R/ST	SF0433-8R/ST	SF0435-8R/ST	upper part, left medial or right lateral, bent outwards, steel (with adjusting screw)
2	SF0432-8L/TI	SF0433-8L/TI	SF0435-8L/TI	upper part, left lateral or right medial, bent outwards, titanium (with adjusting screw)
2	SF0432-8R/TI	SF0433-8R/TI	SF0435-8R/TI	upper part, left medial or right lateral, bent outwards, titanium (with adjusting screw)
2a	SC9605-L08ST	SC9606-L10ST	SC9606-L10ST	adjusting screw
3	GS4007	GS4007	GS4007	securing pin
4	GS2009-*	GS2210-*	GS2611-*	sliding washer*
5	SH0262-L/AL	SH0263-L/AL	SH0265-L/AL	cover plate, left lateral or right medial
5	SH0262-R/AL	SH0263-R/AL	SH0265-R/AL	cover plate, left medial or right lateral
6	SC1405-L10	SC1405-L11	SC1405-L12	countersunk flat head screw with hexalobular socket
7	SC1405-L10	SC1405-L11	SC1406-L12	countersunk flat head screw with hexalobular socket (axle screw)

\* Sliding Washers

	Article Number for System Width		
	14mm	16mm	20mm
	Ø = 20mm	Ø = 22mm	Ø = 26mm
	GS2009-040	GS2210-040	GS2611-040
	GS2009-045	GS2210-045	GS2611-045
	GS2009-050	GS2210-050	GS2611-050
	GS2009-055	GS2210-055	GS2611-055
	GS2009-060	GS2210-060	GS2611-060

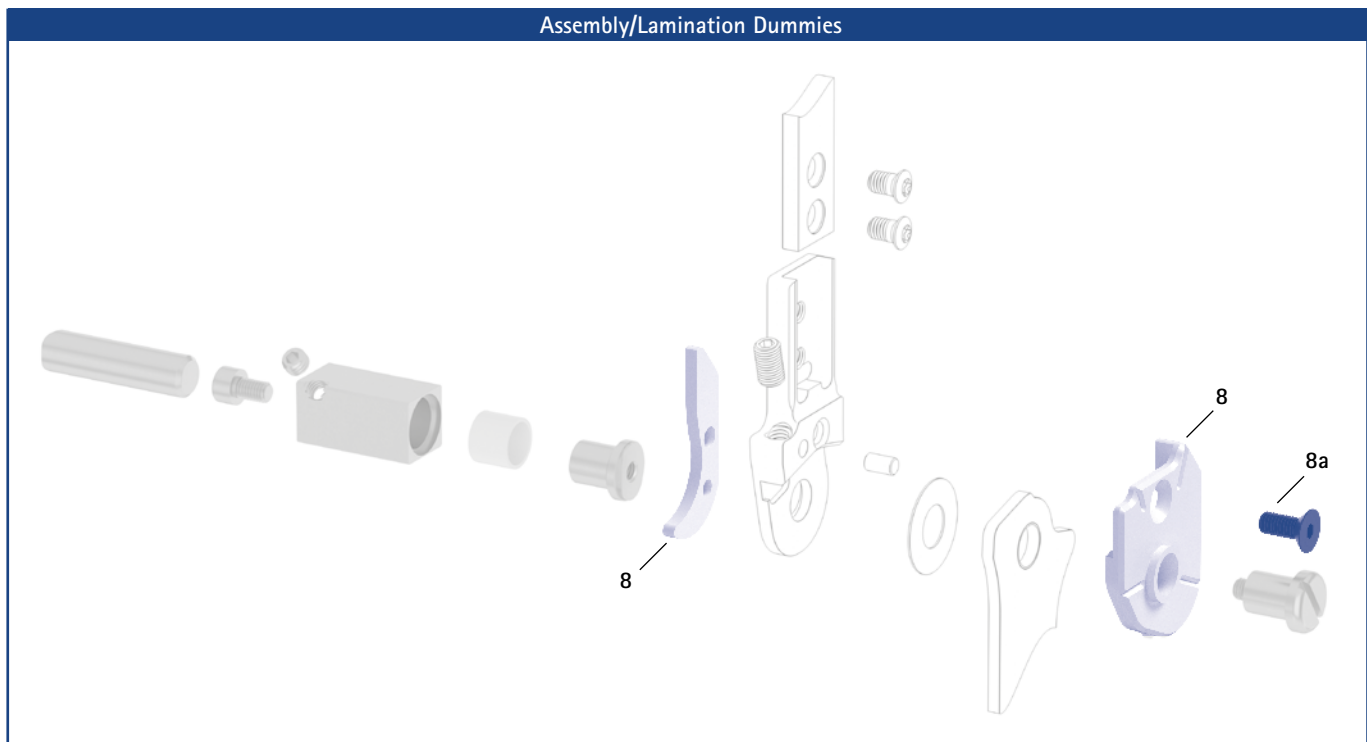
The last three digits of the article number stand for the thickness of the sliding washer, e.g. GS2009-040. The thickness of this sliding washer is 0.40mm. In total, the sliding washers are available in five different thicknesses. The thickness of a sliding washer is indicated by the markings. For example, a sliding washer with two notches is 0.40mm thick, whereas a sliding washer with one notch is 0.55mm thick.



0.40mm 0.45mm 0.50mm 0.55mm 0.60mm

➔ You will find system stirrups on catalogue page B10.7f.

➔ You will find the system side bars and system anchors on catalogue page I1ff.



Assembly/Lamination Dummies					
Item	Article Number for System Width			Description	Unit
	14mm	16mm	20mm		
8	SF0942-L	SF0943-L	SF0945-L	assembly/lamination dummy, left lateral or right medial, two parts (2 dummies with screw)	set
8	SF0942-R	SF0943-R	SF0945-R	assembly/lamination dummy, left medial or right lateral, two parts (2 dummies with screw)	set
8a	SC1055-L12	SC1055-L12	SC1055-L12	countersunk flat head screw with hexagon socket	piece

- ➔ Assembly/lamination dummies are included in the scope of delivery of the system joints.
- ➔ You will find an overview of our tools on catalogue page J1ff.

NEURO VARIO-CLASSIC  
 NEURO VARIO-CLASSIC 2  
 NEURO VARIO  
 NEURO VARIO 2  
 NEURO VARIO-SPRING  
 NEURO VARIO-SPRING 2  
 NEURO VARIO-SWING

# System Stirrups NEURO VARIO-CLASSIC – Bent

NEURO VARIO-CLASSIC

NEURO VARIO-CLASSIC 2



rivet stirrup



lamination/prepreg stirrup



thermoformage stirrup



side view

NEURO VARIO

## General Measures of the System Stirrups

Measure [mm]	System Width		
	14mm	16mm	20mm
thickness	2.5	3.0	3.0
neck width	23.2	26.6	30.8
bore hole diameter	8.5	9.6	10.5

NEURO VARIO 2

## Bent

Description	Leg Side	Unit	Article Number and Measures for System Width		
			14mm	16mm	20mm
rivet stirrup	left lateral or right medial	piece	FB4082-L/ST4	FB4093-L/ST4	FB4095-L/ST5
	left medial or right lateral		FB4082-R/ST4	FB4093-R/ST4	FB4095-R/ST5
length from the middle of the bore hole [mm]			124	144	164
weight [g]			67	106	134
lamination/prepreg stirrup	left lateral or right medial	piece	FB4182-L/ST1	FB4193-L/ST1	FB4195-L/ST1
	left medial or right lateral		FB4182-R/ST1	FB4193-R/ST1	FB4195-R/ST1
length from the middle of the bore hole [mm]			50	58	68
weight [g]			32	52	68
thermoformage stirrup	left lateral or right medial	piece	FB4282-L/ST2	FB4293-L/ST2	FB4295-L/ST3
	left medial or right lateral		FB4282-R/ST2	FB4293-R/ST2	FB4295-R/ST3
length from the middle of the bore hole [mm]			61	67	73
weight [g]			32	50	61

NEURO VARIO-SPRING

NEURO VARIO-SPRING 2

NEURO VARIO-SWING



rivet stirrup



lamination/prepreg stirrup



thermoformage stirrup

**Straight**

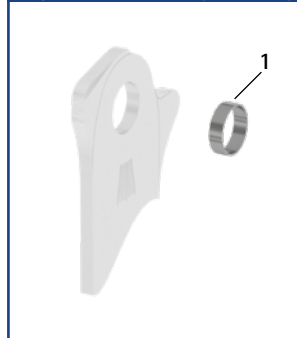
Description	Unit	Article Number and Measures for System Width		
		14mm	16mm	20mm
rivet stirrup	piece	FB4082-ST/4	FB4093-ST/4	FB4095-ST/5
length from the middle of the bore hole [mm]		125	145	165
weight [g]		67	106	134
lamination/prepreg stirrup	piece	FB4182-ST/1	FB4193-ST/1	FB4195-ST/1
length from the middle of the bore hole [mm]		51	59	69
weight [g]		32	52	68
thermoformage stirrup	piece	FB4282-ST/2	FB4293-ST/2	FB4295-ST/3
length from the middle of the bore hole [mm]		62	68	74
weight [g]		32	50	61

**Spare Parts Sliding Bushing**

Item	Article Number for System Width			Description
	14mm	16mm	20mm	
1	BR1009-L025	BR1110-L030	BR1211-L030	sliding bushing

➔ All system stirrups of the NEURO VARIO-CLASSIC system ankle joint are delivered with an integrated sliding bushing.

**Spare Parts Sliding Bushing**



**Information for Processing**

**Rivet Stirrup:**

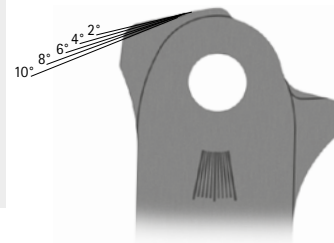
➔ This system stirrup is riveted to the foot piece.

**Lamination/Prepreg Stirrup:**

➔ This system stirrup is embedded into the laminate of the foot piece.

**Thermoformage Stirrup:**

➔ This system stirrup is embedded into thermoformable plastics, but can be embedded into laminates as well.



➔ The system stirrup is marked with lines in the head area which serve as orientation for precisely filing the stirrup to the desired dorsiflexion stop.

➔ The system stirrup is marked with lines in the neck area in order to read the joint angle.