

NEURO CLASSIC

NEURO VARIO

NEURO VARIO 2

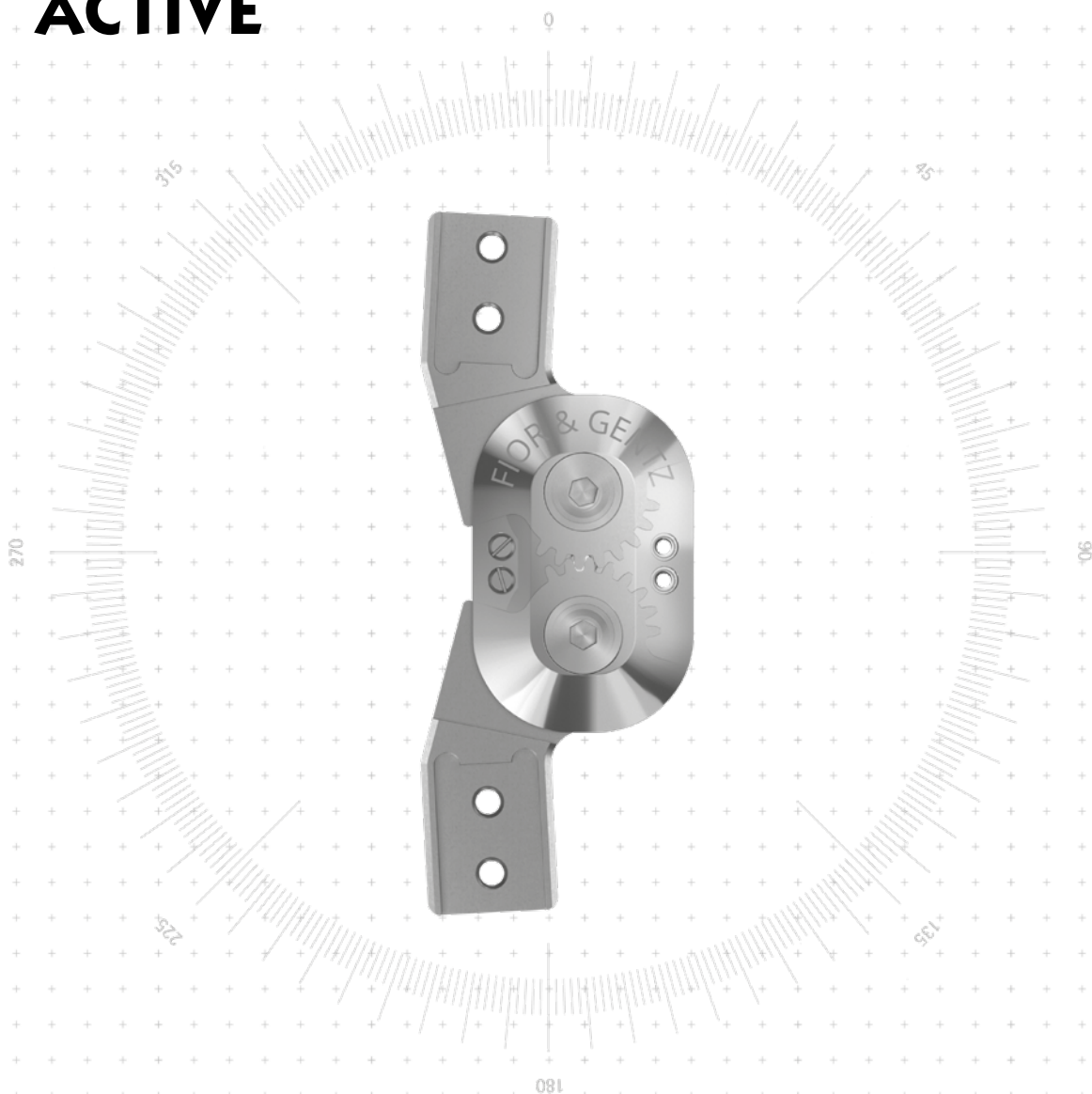
NEURO VARIO-SWING

NEURO ACTIVE
System Knee Joint

NEURO ACTIVE
System Side Bar

NEURO CLASSIC Carbon

NEURO ACTIVE



Main Function



polycentric, free moving with posterior offset

- preassembled in 5° flexion

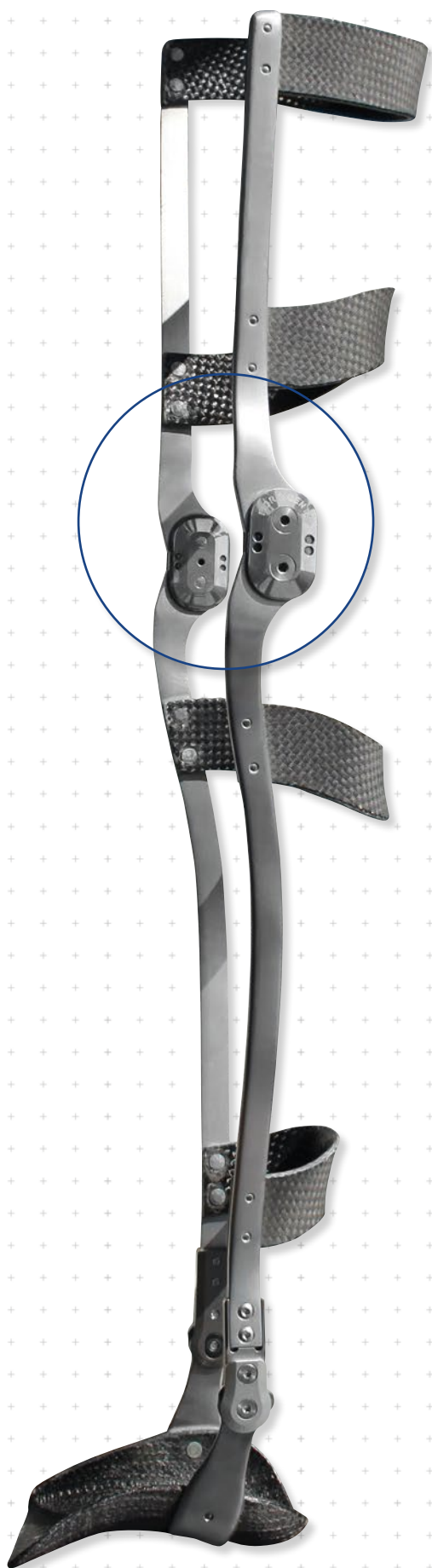
Type of Extension Stop



static extension stop, exchangeable

Adjustment Options

range of motion in extension and flexion can be limited as required by exchanging the stops



NEURO CLASSIC

NEURO VARIO

NEURO VARIO 2

NEURO VARIO-SWING

NEURO ACTIVE
System Knee Joint

NEURO ACTIVE
Articulated System Side Bar

NEURO CLASSIC Carbon

NEURO CLASSIC

NEURO VARIO

NEURO VARIO 2

NEURO VARIO-SWING

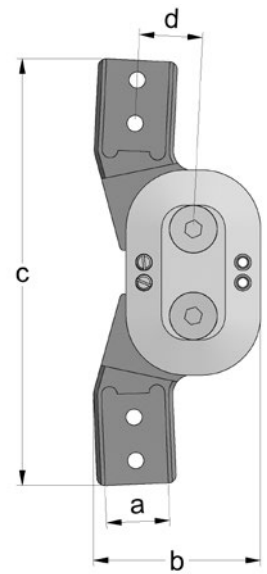
NEURO ACTIVE
System Knee Joint

NEURO ACTIVE
Articulated System Side Bar

NEURO CLASSIC Carbon



16mm



Joint Dimensions [mm]		
Dimension	Description	System Width a 16mm
b	joint head width	42
c	joint height	108
d	posterior offset	16
	joint thickness	11

Joint Weights [g]		
Material	Unit	System Width 16mm
steel	piece	137

The NEURO ACTIVE system knee joint is delivered with the following articles:
orthosis joint grease, 3g
orthosis joint grease for joints with gear segments, 3g
assembly/lamination dummy

- ➔ Please order system side bars/anchors separately.
- ➔ You will find system side bars/anchors on catalogue page 11ff.

E50.3



straight
fig. 1



bent inwards distally
fig. 2



bent inwards proximally and distally
fig. 3

Straight (Fig. 1)			
Material	Leg Side	Unit	Article Number for System Width 16mm
steel	left lateral or right medial	piece	SK2303-L/ST
	left medial or right lateral	piece	SK2303-R/ST

Bent Inwards Distally (Fig. 2)			
Material	Leg Side	Unit	Article Number for System Width 16mm
steel	left lateral or right medial	piece	SK2313-L/ST
	left medial or right lateral	piece	SK2313-R/ST

Bent Inwards Proximally and Distally (Fig. 3)			
Material	Leg Side	Unit	Article Number for System Width 16mm
steel	left lateral or right medial	piece	SK2323-L/ST
	left medial or right lateral	piece	SK2323-R/ST

NEURO CLASSIC

NEURO VARIO

NEURO VARIO 2

NEURO VARIO-SWING

NEURO ACTIVE
System Knee Joint

NEURO ACTIVE
Articulated System Side Bar

NEURO CLASSIC Carbon

NEURO CLASSIC

NEURO VARIO

NEURO VARIO 2

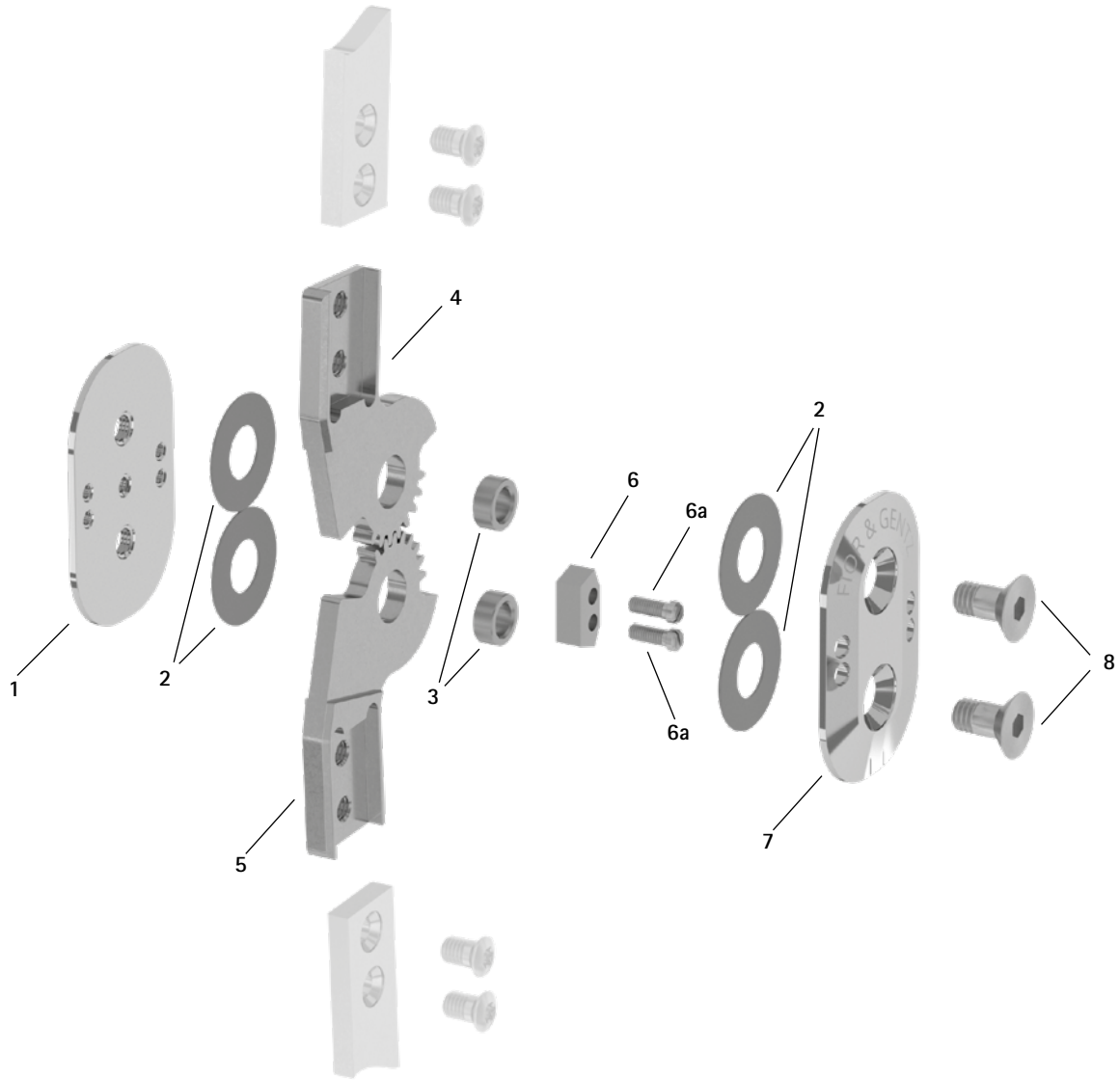
NEURO VARIO-SWING

NEURO ACTIVE
System Knee Joint

NEURO ACTIVE
Articulated System Side Bar

NEURO CLASSIC Carbon

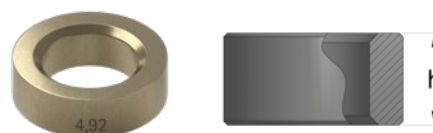
Spare Parts



Spare Parts		
Item	Article Number for System Width 16mm	Description
1	SK0250-ST	base plate
2	GS2210-050	sliding washer
3	BB9664-*	bronze bushing*
4	SK0203-L/ST	upper part, left lateral or right medial, straight, steel
4	SK0203-R/ST	upper part, left medial or right lateral, straight, steel
4	SK0223-L/ST	upper part, left lateral or right medial, bent inwards, steel
4	SK0223-R/ST	upper part, left medial or right lateral, bent inwards, steel
5	SK0213-L/ST	lower part, left lateral or right medial, straight, steel
5	SK0213-R/ST	lower part, left medial or right lateral, straight, steel
5	SK0233-L/ST	lower part, left lateral or right medial, bent inwards, steel
5	SK0233-R/ST	lower part, left medial or right lateral, bent inwards, steel
6	BK9051-E005	5° extension stop with 2 slotted pan head screws
6a	SC2103-L08	slotted pan head screw
7	SK0251-ST	cover plate
8	SC1016-L12	countersunk flat head screw with hexagon socket and shank

* Bronze Bushings	
Article Number and Height for System Width 16mm	
Ø = 9.6mm	Height (h)
BB9664-92	4.92mm
BB9664-95	4.95mm
BB9664-98	4.98mm

➔ You will find system side bars and system anchors on catalogue page I1ff.



The last three digits of the article number stand for the height (h) of the bronze bushing e.g. **BB9664-92**.

The height of this bronze bushing is 4.92mm. It is engraved on the outside of the bronze bushing. Note and respect that when reordering. If the digits are illegible, measure the height.

NEURO CLASSIC

NEURO VARIO

NEURO VARIO 2

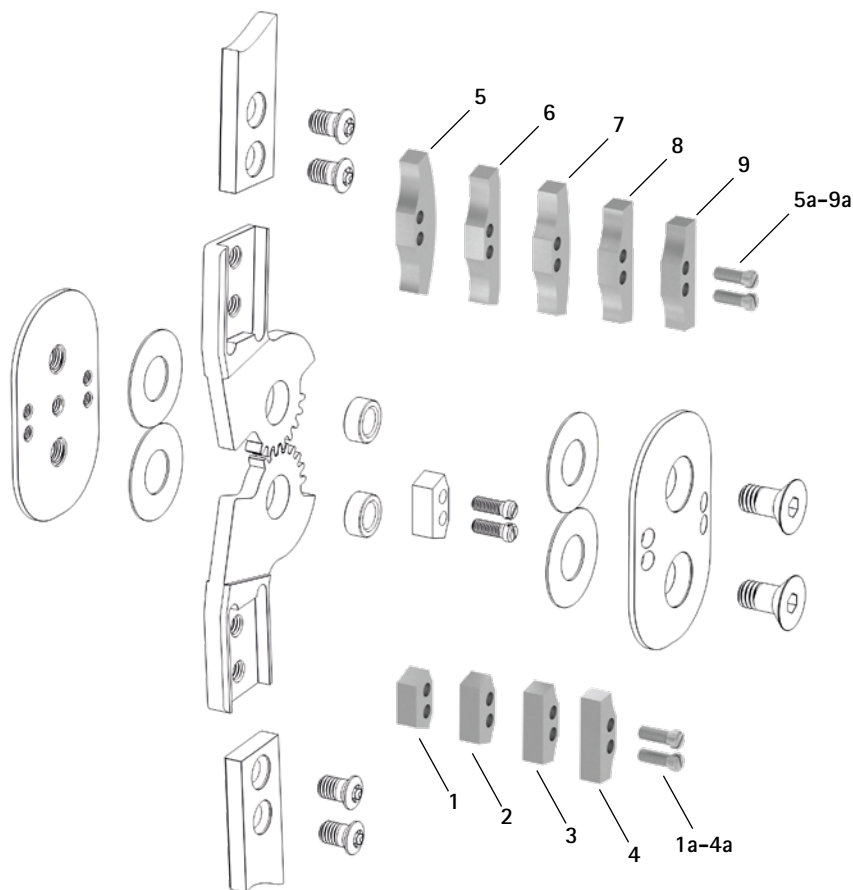
NEURO VARIO-SWING

NEURO ACTIVE
System Knee Joint

NEURO ACTIVE
Articulated System Side Bar

NEURO CLASSIC Carbon

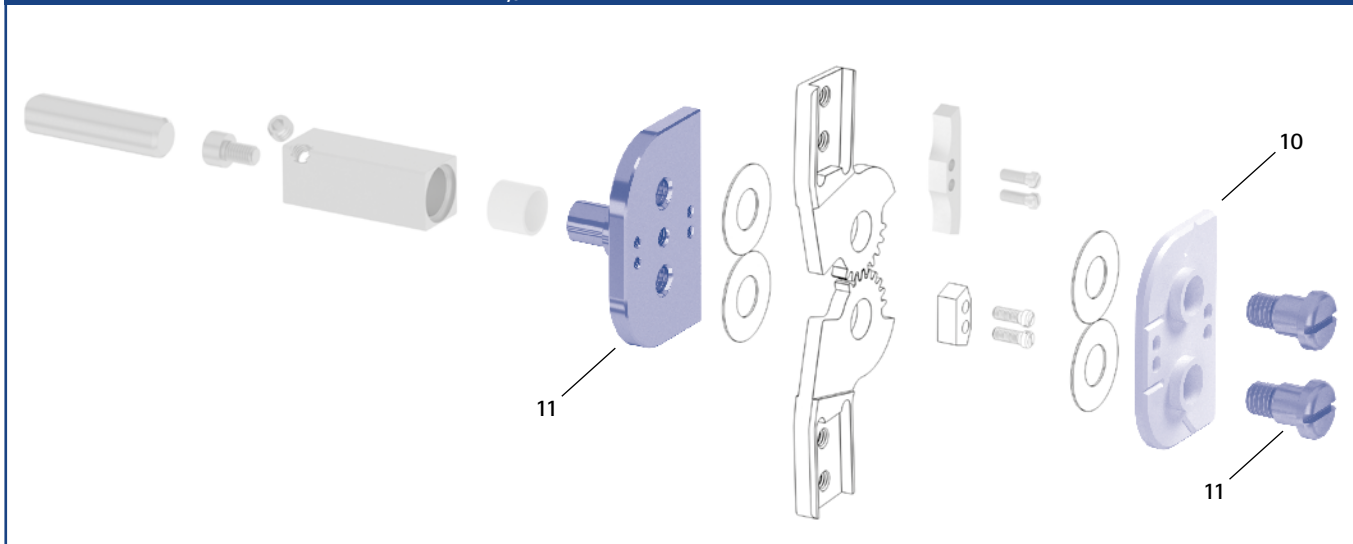
Extension and Flexion Stops



Accessory Parts

Item	Article Number for System Width		Description
	16mm		
1	BK9051-E000		0° extension stop/80° flexion stop with 2 slotted pan head screws
2	BK9051-E010		10° extension stop/70° flexion stop with 2 slotted pan head screws
3	BK9051-E020		20° extension stop/60° flexion stop with 2 slotted pan head screws
4	BK9051-E030		30° extension stop/50° flexion stop with 2 slotted pan head screws
5	BK9051-F000		0° flexion stop with 2 slotted pan head screws
6	BK9051-F005		5° flexion stop with 2 slotted pan head screws
7	BK9051-F010		10° flexion stop with 2 slotted pan head screws
8	BK9051-F020		20° flexion stop with 2 slotted pan head screws
9	BK9051-F030		30° flexion stop with 2 slotted pan head screws
1a-9a	SC2103-L08		slotted pan head screw

Assembly/Lamination Dummies and Joint Retainers



Assembly/Lamination Dummies and Joint Retainers

Item	Article Number for System Width 16mm	Description	Unit
10	SK0923-LR	assembly/lamination dummy	piece
11	PZ3100-LR	joint retainer	piece

- ➔ Assembly/lamination dummies are included in the scope of delivery of the system joints.
- ➔ You will find an overview of our tools on catalogue page J1ff.
- ➔ You will also find the joint retainers in the tool case on the catalogue pages J13 and J14.

NEURO CLASSIC

NEURO VARIO

NEURO VARIO 2

NEURO VARIO-SWING

NEURO ACTIVE
System Knee Joint

NEURO ACTIVE
Articulated System Side Bar

NEURO CLASSIC Carbon