

NEURO CLASSIC

NEURO VARIO

NEURO VARIO 2

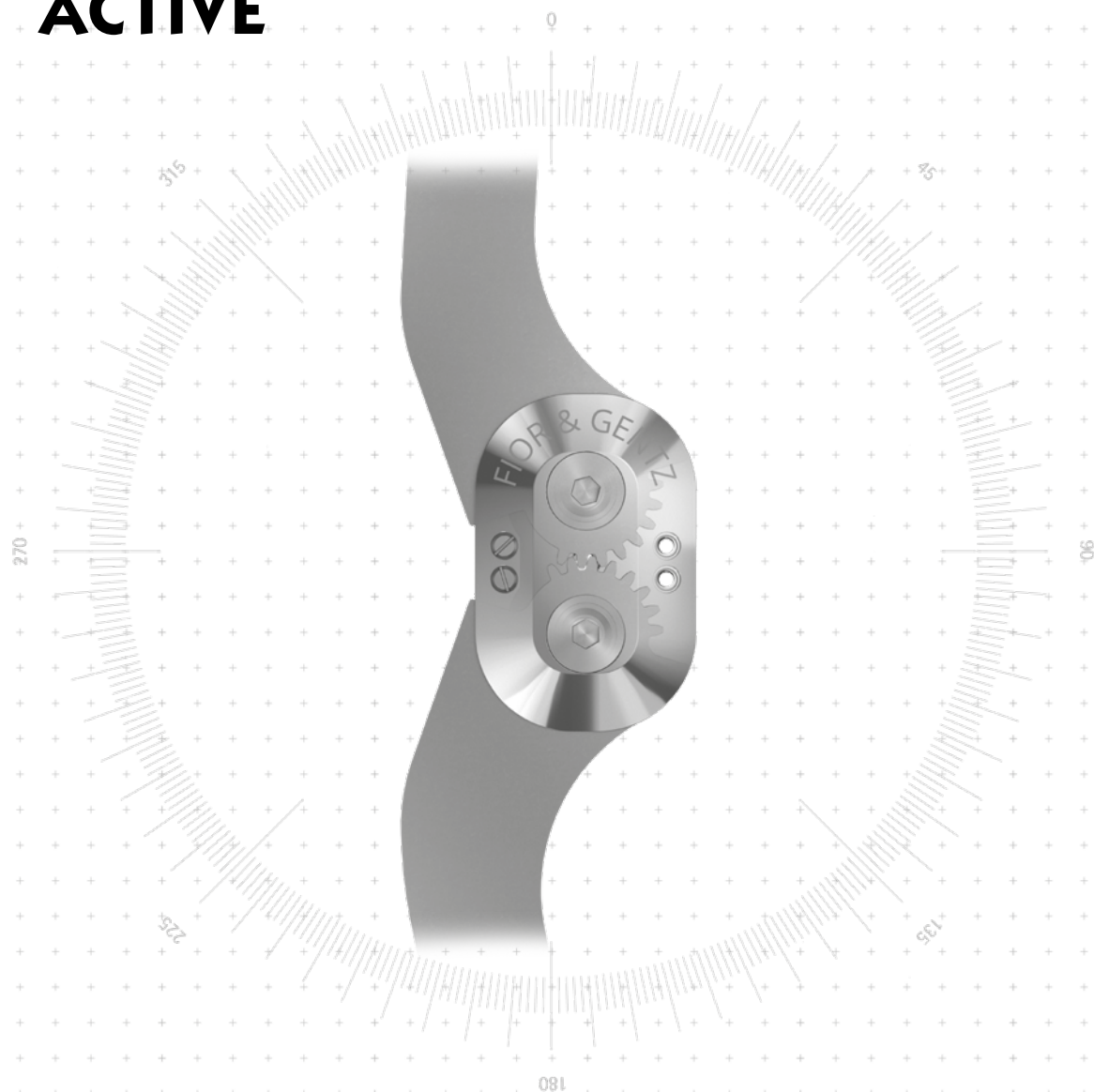
NEURO VARIO-SWING

NEURO ACTIVE  
System Knee Joint

NEURO ACTIVE  
Articulated System Side Bar

NEURO CLASSIC Carbon

# NEURO ACTIVE



## Main Function



polycentric, free moving with posterior offset  
- preassembled in 5° flexion

## Type of Extension Stop



static extension stop, exchangeable

## Adjustment Options

range of motion in extension and flexion can be limited as required by exchanging the extension and flexion stop



NEURO CLASSIC

NEURO VARIO

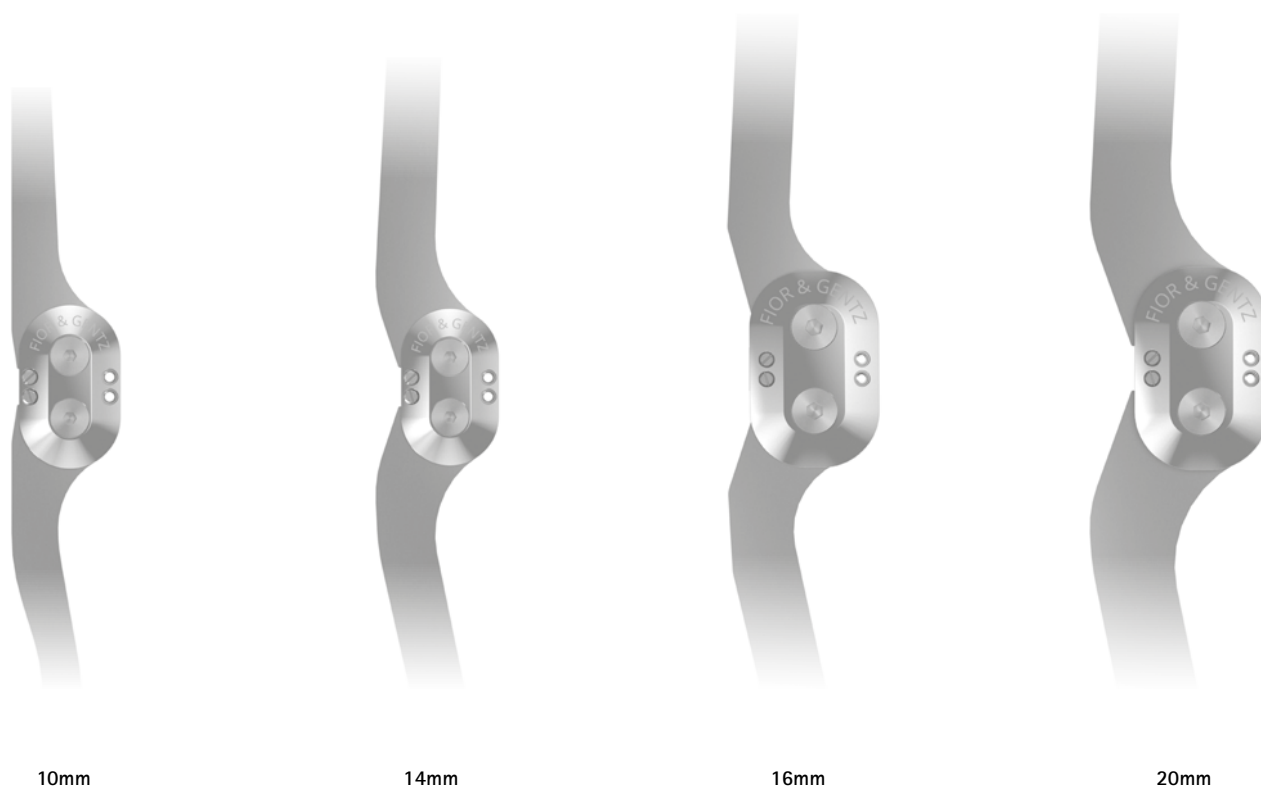
NEURO VARIO 2

NEURO VARIO-SWING

NEURO ACTIVE  
System Knee Joint

NEURO ACTIVE  
Articulated System Side Bar

NEURO CLASSIC Carbon



10mm

14mm

16mm

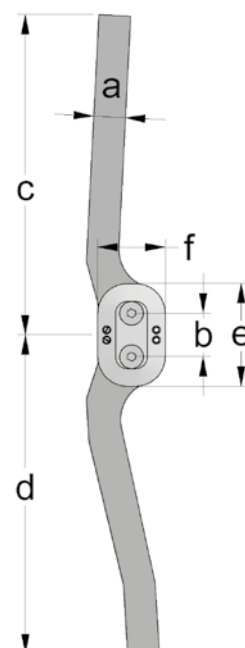
20mm

### Articulated Side Bar Dimensions [mm]

Dimension	Description	System Width a			
		10mm	14mm	16mm	20mm
b	centre distance	16	16	22	22
c	side bar length	200	280	360	440
d	side bar length	320	400	480	560
e	cover plate height	42	42	52	52
f	cover plate width	26	26	34	34
	side bar thickness	3	4	5	6
	joint thickness	9	10	11	13
	posterior offset	10	14	16	20

### Articulated Side Bar Weights [g]

Material	Unit	System Width			
		10mm	14mm	16mm	20mm
aluminium	pair	128	260	542	828
	piece	64	130	271	414



The NEURO ACTIVE articulated system side bar is delivered with the following articles:

- orthosis joint grease, 3g
- orthosis joint grease for joints with gear segments, 3g
- assembly/lamination dummy



straight  
fig. 1

Straight (Fig. 1)						
Material	Leg/Leg Side	Unit	Article Number for System Width			
			10mm	14mm	16mm	20mm
aluminium	left or right	pair	BK2200-AL	BK2302-AL	BK2303-AL	BK2405-AL
	left lateral or right medial	piece	BK2200-L/AL	BK2302-L/AL	BK2303-L/AL	BK2405-L/AL
	left medial or right lateral	piece	BK2200-R/AL	BK2302-R/AL	BK2303-R/AL	BK2405-R/AL

NEURO CLASSIC

NEURO VARIO

NEURO VARIO 2

NEURO VARIO-SWING

NEURO ACTIVE  
System Knee Joint

NEURO ACTIVE  
Articulated System Side Bar

NEURO CLASSIC Carbon

NEURO CLASSIC

NEURO VARIO

NEURO VARIO 2

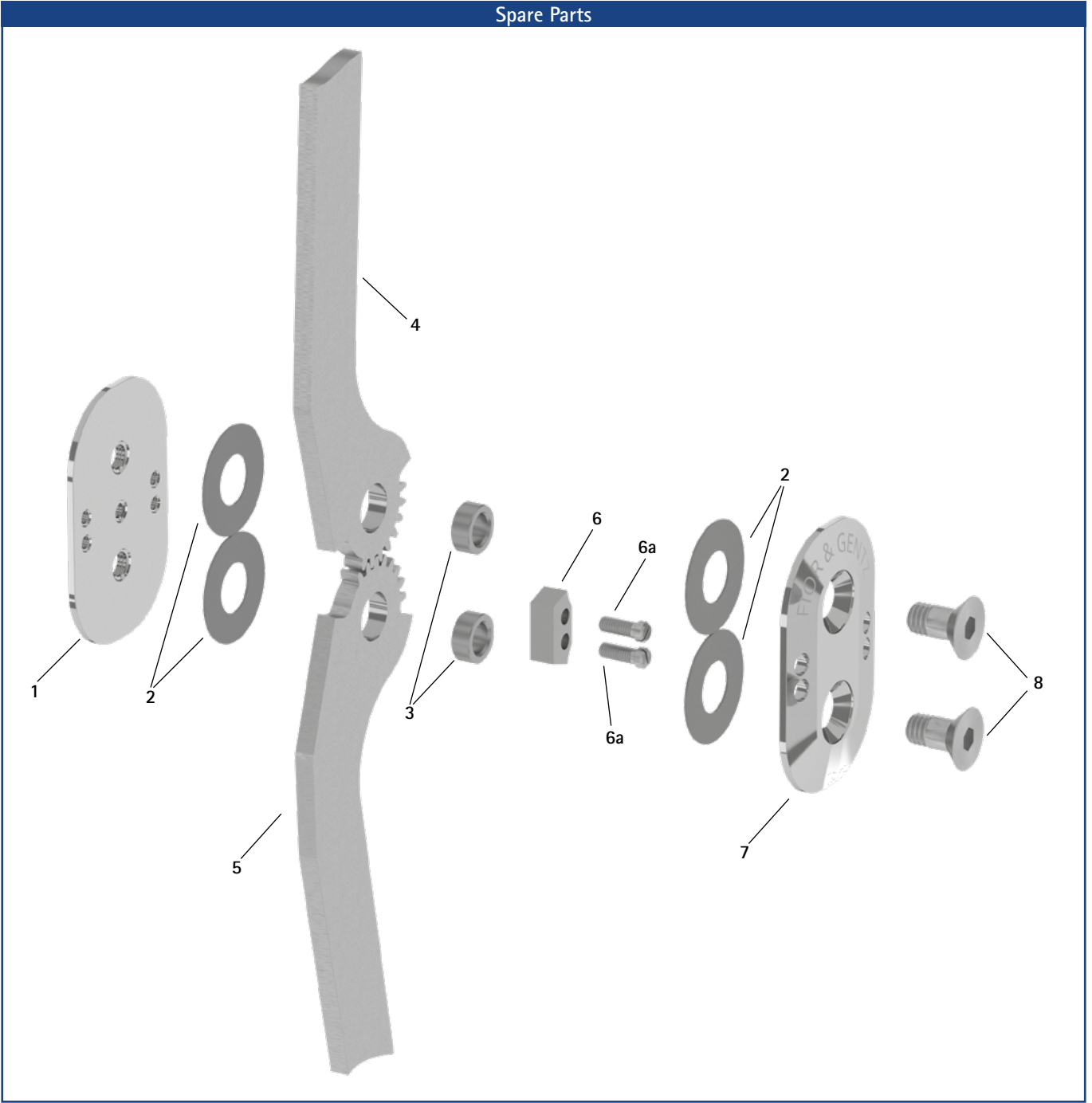
NEURO VARIO-SWING

NEURO ACTIVE  
System Knee Joint

NEURO ACTIVE  
Articulated System Side Bar

NEURO CLASSIC Carbon

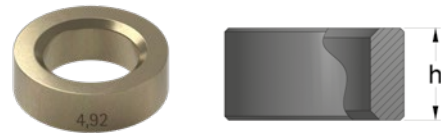
Spare Parts



Spare Parts					
Item	Article Number for System Width				Description
	10mm	14mm	16mm	20mm	
1	KS0150-AL	KS0150-AL	SK0250-ST	SK0250-ST	base plate
2	GS1609-050	GS1609-050	GS2210-050	GS2210-050	sliding washer
3	BB8553-*	BB8554-*	BB9665-*	BB9666-*	bronze bushing*
4	BK0200-AL	BK0202-AL	BK0203-AL	BK0205-AL	femoral side bar wing, aluminium
5	BK0210-AL	BK0212-AL	BK0213-AL	BK0215-AL	tibial side bar wing, aluminium
6	KS9502-E005	KS9502-E005	BK9051-E005	BK9061-E005	5° extension stop with 2 slotted pan head screws
6a	SC2103-L06	SC2103-L06	SC2103-L08	SC2103-L08	slotted pan head screw
7	KS0151-AL/FG	KS0151-AL/FG	SK0251-ST	SK0251-ST	cover plate
8	SC1015-L11	SC1015-L12	SC1016-L13	SC1016-L14	countersunk flat head screw with hexagon socket and shank

* Bronze Bushings							
Article Number and Height for System Width							
10mm		14mm		16mm		20mm	
Ø = 8.5mm	Height (h)	Ø = 8.5mm	Height (h)	Ø = 9.6mm	Height (h)	Ø = 9.6mm	Height (h)
BB8553-89	3.89mm	BB8554-89	4.89mm	BB9665-89	5.89mm	BB9666-89	6.89mm
BB8553-92	3.92mm	BB8554-92	4.92mm	BB9665-92	5.92mm	BB9666-92	6.92mm
BB8553-95	3.95mm	BB8554-95	4.95mm	BB9665-95	5.95mm	BB9666-95	6.95mm
BB8553-98	3.98mm	BB8554-98	4.98mm	BB9665-98	5.98mm	BB9666-98	6.98mm

The last three digits of the article number stand for the height (h) of the bronze bushing e.g. BB8554-92. The height of this bronze bushing is 4.92mm. It is engraved on the outside of the bronze bushing. Note and respect that when reordering. If the digits are illegible, measure the height.



NEURO CLASSIC

NEURO VARIO

NEURO VARIO 2

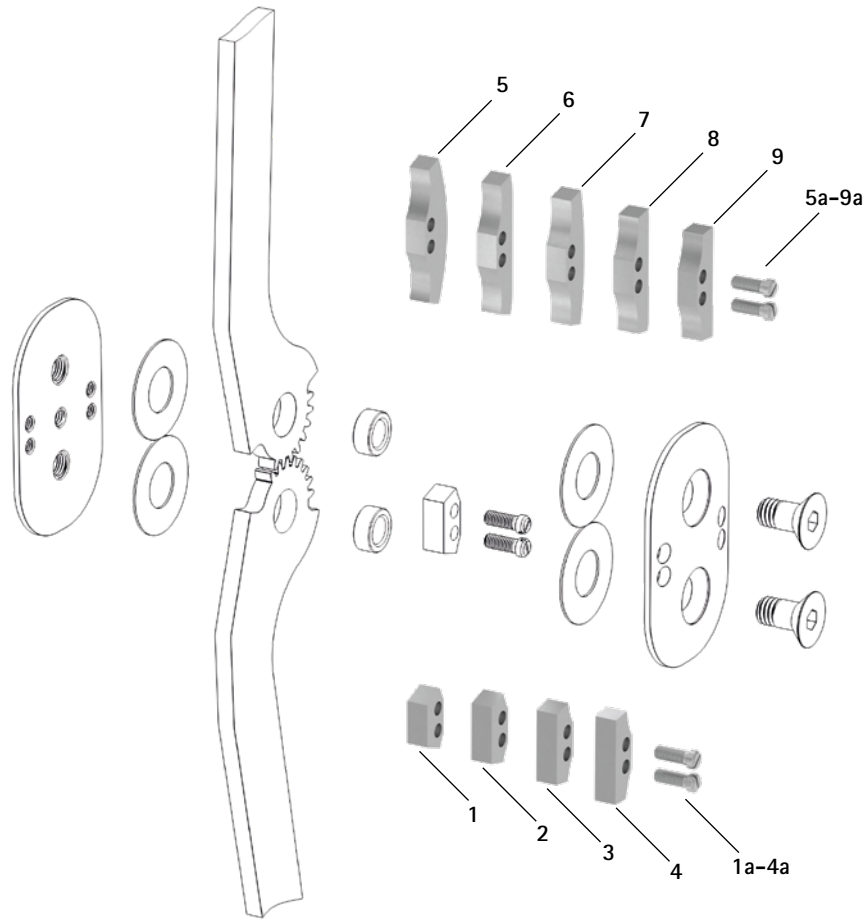
NEURO VARIO-SWING

NEURO ACTIVE  
System Knee Joint

NEURO ACTIVE  
Articulated System Side Bar

NEURO CLASSIC Carbon

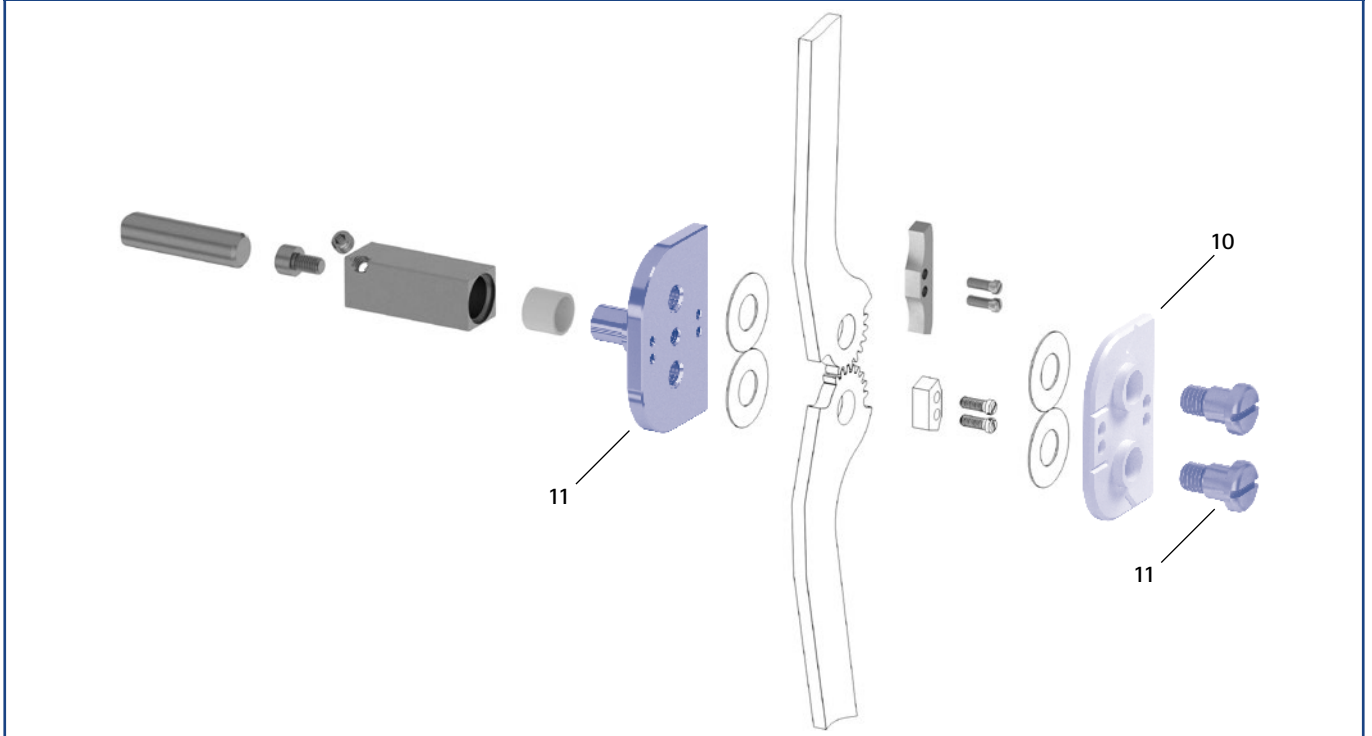
Extension and Flexion Stops



Accessory Parts

Item	Article Number for System Width				Description
	10mm	14mm	16mm	20mm	
1	KS9502-E000	KS9502-E000	-	-	0° extension stop/100° flexion stop with 2 slotted pan head screws
1	-	-	BK9051-E000	BK9061-E000	0° extension stop/80° flexion stop with 2 slotted pan head screws
2	KS9502-E010	KS9502-E010	-	-	10° extension stop/90° flexion stop with 2 slotted pan head screws
2	-	-	BK9051-E010	BK9061-E010	10° extension stop/70° flexion stop with 2 slotted pan head screws
3	KS9502-E020	KS9502-E020	-	-	20° extension stop/80° flexion stop with 2 slotted pan head screws
3	-	-	BK9051-E020	BK9061-E020	20° extension stop/60° flexion stop with 2 slotted pan head screws
4	KS9502-E030	KS9502-E030	-	-	30° extension stop/70° flexion stop with 2 slotted pan head screws
4	-	-	BK9051-E030	BK9061-E030	30° extension stop/50° flexion stop with 2 slotted pan head screws
5	KS9502-F000	KS9502-F000	BK9051-F000	BK9061-F000	0° flexion stop with 2 slotted pan head screws
6	-	-	BK9051-F005	-	5° flexion stop with 2 slotted pan head screws
7	KS9502-F010	KS9502-F010	BK9051-F010	BK9061-F010	10° flexion stop with 2 slotted pan head screws
8	KS9502-F020	KS9502-F020	BK9051-F020	BK9061-F020	20° flexion stop with 2 slotted pan head screws
9	KS9502-F030	KS9502-F030	BK9051-F030	BK9061-F030	30° flexion stop with 2 slotted pan head screws
1a-9a	SC2103-L06	SC2103-L06	SC2103-L08	SC2103-L08	slotted pan head screw

Assembly/Lamination Dummies and Joint Retainers



Assembly/Lamination Dummies and Joint Retainers

Item	Article Number for System Width				Description	Unit
	10mm	14mm	16mm	20mm		
10	KS0250	KS0250	SK0923-LR	SK0923-LR	assembly/lamination dummy	piece
11	PZ4100-LR	PZ4100-LR	PZ3100-LR	PZ3100-LR	joint retainer	piece

- ➔ Assembly/lamination dummies are included in the scope of delivery of the system joints.
- ➔ You will find an overview of our tools on catalogue page J1ff.
- ➔ You will also find the joint retainers in the tool case on the catalogue pages J13 and J14.

NEURO CLASSIC

NEURO VARIO

NEURO VARIO 2

NEURO VARIO-SWING

NEURO ACTIVE  
System Knee Joint

NEURO ACTIVE  
Articulated System Side Bar

NEURO CLASSIC Carbon